



# Sage Construction Management



# RKL eSolutions Introductions



**Mark Severance**  
*Director of Cloud Sales*

With his 20+ years of experience, Mark assists growing companies evaluate and select software solutions that match their needs.

**Direct:** (717) 869-4335  
**Mobile:** 805-368-8973  
**E-mail:** [mseverance@rklesolutions.com](mailto:mseverance@rklesolutions.com)



**David Cieslak, CPA**  
*Chief Cloud Officer*

David has 30+ years of experience helping companies grow, evaluate implementation software and build solutions that match his clients' individual needs.

**Direct:** (717) 409-8835  
**E-mail:** [dcieslak@rklesolutions.com](mailto:dcieslak@rklesolutions.com)



**Ben Hofferma**  
*Chief Construction and Real Estate Officer*

With his 30+ years of experience in the construction and real estate industry, Ben is now focused on expanding growth opportunities for future and current clients.

**Direct:** (610) 862-0035  
**E-mail:** [bshofferma@rklesolutions.com](mailto:bshofferma@rklesolutions.com)

# Construction Management Challenges



1

Too much paper and email and Excel spreadsheets and sticky notes and text messages and ...



2

Too little collaboration between the field team (PMs, PCs, supers, subs) and back office personnel



3

Some project mgmt. solutions are too complex & expensive for small- to mid-sized contractors

# Sage Construction Management

## Modern cloud platform

- Streamlines your project operations on one modern cloud platform

## Built for collaboration & mobility

- Connect all stakeholders in construction, within and across company boundaries

## End-to-end suite for construction

- Combine with Sage Construction Financials for an end-to-end suite for construction to maximize project profitability



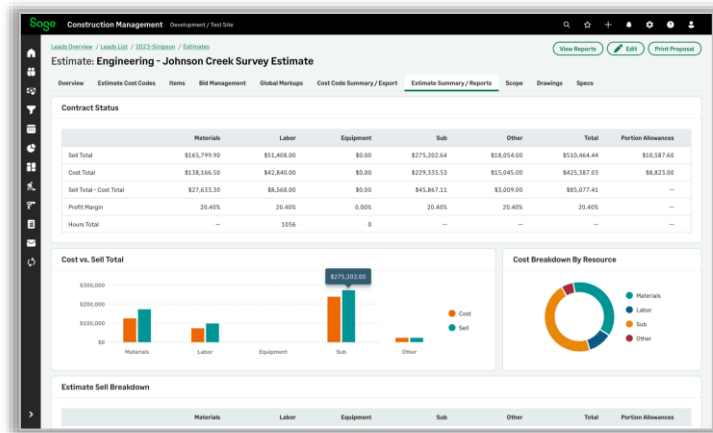


# Sage Construction Management

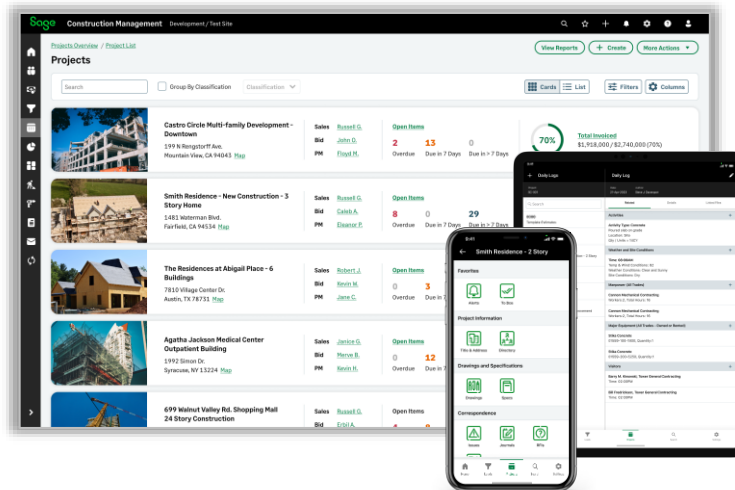
Streamline Your Construction Operations

Win more business & efficiently deliver projects on time and on budget

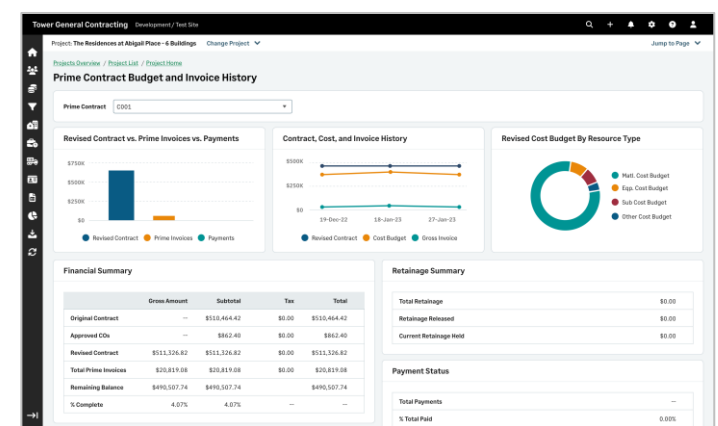
## Preconstruction



## Project Management



## Project & Financial Insight



Collaborate & align all stakeholders within and across company boundaries

# An Inside Look at Sage Construction Management

# Sage Construction Management Features

## ESTIMATING

- Document Leads (Opportunities)
- Upload drawings and specs
- Invite subs and suppliers to bid (ITB)
- Prepare estimates
- Prepare RFP Packages
- Track Lead Status using Stages
- Lead Analytics

## PROJECT MANAGEMENT & FIELD STAFF

- Contract administration
- Procurement
- Timecards & Misc. expenses
- Project financial analytics
- Correspondence
- Documentation
- Quality Control & Safety
- Scheduling

### TEAMLINK PORTAL

- Client, sub, and architect collaboration

## ACCOUNTING

- Contract Administration
- Procurement
- HR, Timecards, & Misc. expenses
- Project financial analytics

### ACCOUNTING LINK

- Sync customers, vendors, employees
- Export project transactions
- Import payment status information

### SAGE CONSTRUCTION ACCOUNTING

- |            |                   |                                 |
|------------|-------------------|---------------------------------|
| ○ Payroll  | ○ Deposits        | ○ Corporate financial reporting |
| ○ Payments | ○ Reconciliations |                                 |

# To Learn More



- **Schedule an automation assessment** with RKL (contact Steve or Mark)
- **Collaboratively develop a list** of automation priorities
- **Tackle your top priority** (evaluate, implement, assess)
- **Keep going!!** The RKL team is eager to take this journey with you. 😊



# Do You Have Questions?





# Let Us Know How We Can Help!

Whatever your next move, we're here to help.

Mark Severance

[mseverance@rklsolutions.com](mailto:mseverance@rklsolutions.com)

Ben Hofferma

[bshofferman@rklsolutions.com](mailto:bshofferman@rklsolutions.com)

David Cieslak

[dcieslak@rklsolutions.com](mailto:dcieslak@rklsolutions.com)

Steve Pierce

[smpierce@rklsolutions.com](mailto:smpierce@rklsolutions.com)

