

Supply Chain Trends & Their Impact in 2022

Russ Graf

VP, Channel Management

russ@netstock.co



Agenda.

- 1 Who we are
- 2 The state of the supply chain
- 3 Tools to stay competitive
- 4 Demo – see the solution in action
- 5 Q & A

\ About us

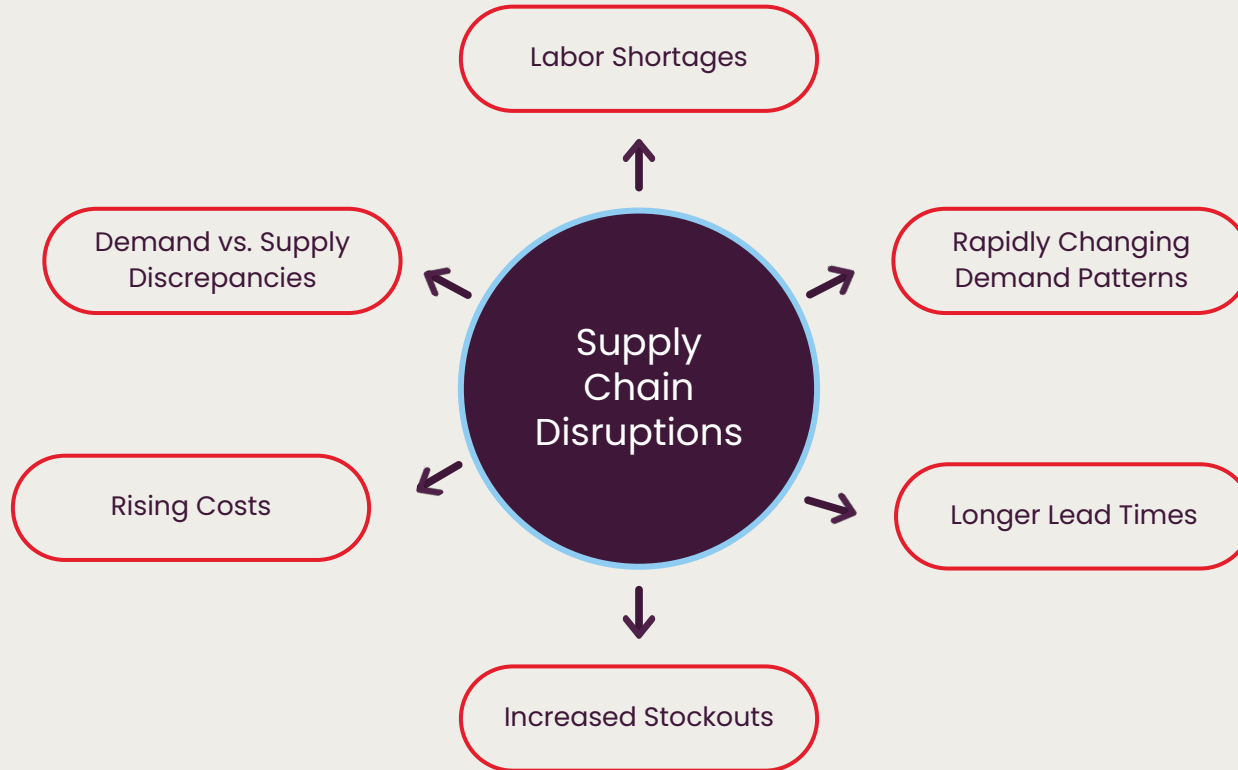


Sage Inventory Advisor, powered by Netstock, provides intelligent inventory optimization tools.

Unravel the complexity of the modern supply chain, delivering predictive forecasting and planning, highly automated workflows and purpose-built integrations that enable confident, data-driven decision-making across your entire company.



\ Supply chain disruption is not going anywhere



\ Today's Challenges



Have plenty of stock-outs...



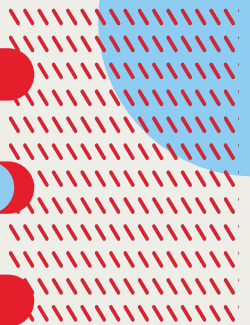
Yet still have significant excess...



Spending too much time on ordering...



Poor forecast accuracy...





**Using analog tools
to compete in a dynamic,
data-driven world means
constantly playing from behind.**

Technology to enhance existing ERP data is critical

ERP software is the backbone of the modern supply chain but most were not built to manage the complexities of *optimizing* inventory.

Integrating your ERP software with a demand planning solution can transform your supply chain by adding critical features that help keep your business competitive.



Intelligent automation that frees your time



Sophisticated analytics for supply chain visibility



Prescriptive insights for confident decision-making

With Sage Inventory Advisor

- ✓ Supply and demand planning
- ✓ Ability to model different inventory policy
- ✓ Generates ideal order recommendations
- ✓ Tracks performance against targets
- ✓ Projects stock and purchases into the future



Without Sage Inventory Advisor

- ✗ Reacting to supply and demand volatility
- ✗ Working capital tied up in inventory
- ✗ Lower sales because of stock-outs
- ✗ Backward looking reporting

Leveling the playing field to compete and grow



Predictability in the era of change



Capture loyalty & profit potential



Powerful simplicity



Capital savings for reinvestment



Prescriptive insights in real time



Future-proofing your business



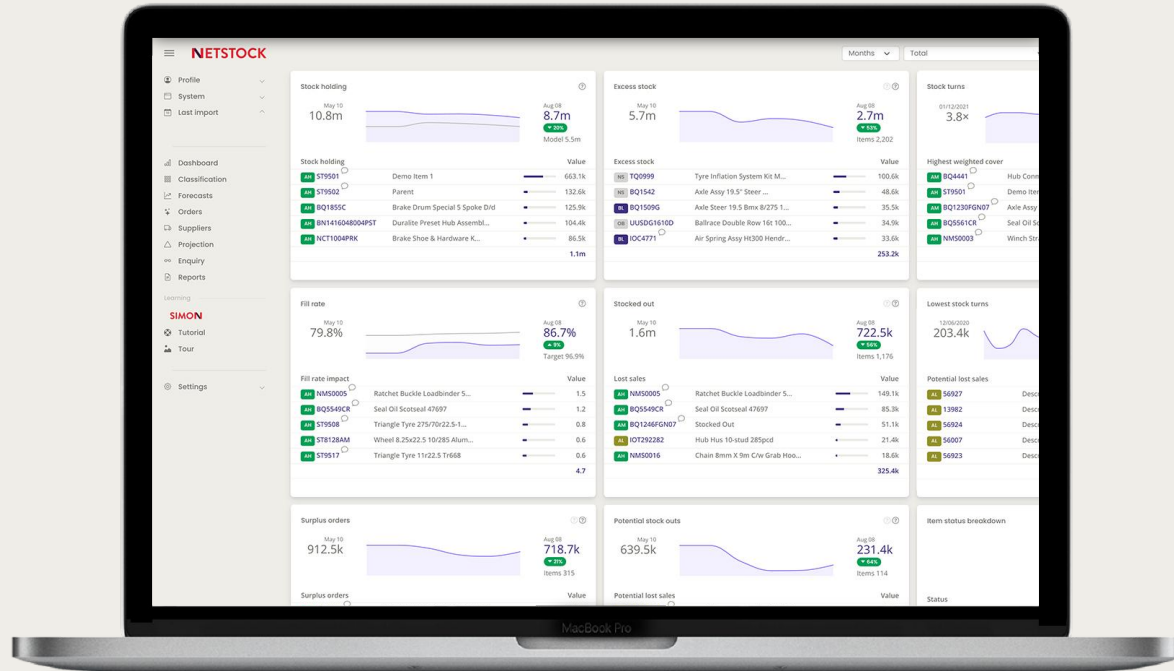
\ Netstock success story



Netstock may not be able to clear the Suez Canal, reopen closed ports, or provide higher shipping capacity, but thanks to Netstock we can anticipate the logistical impact of this incomprehensible year and activate a Plan B early enough.

I can't even imagine how we would have gotten through this year without Netstock I would like to express my deepest appreciation for the great support we have received.







Get in
touch!

Russ Graf

VP, Channel Management

russ@netstock.co

<https://www.linkedin.com/in/russgraf/>

www.netstock.com



Thank you.