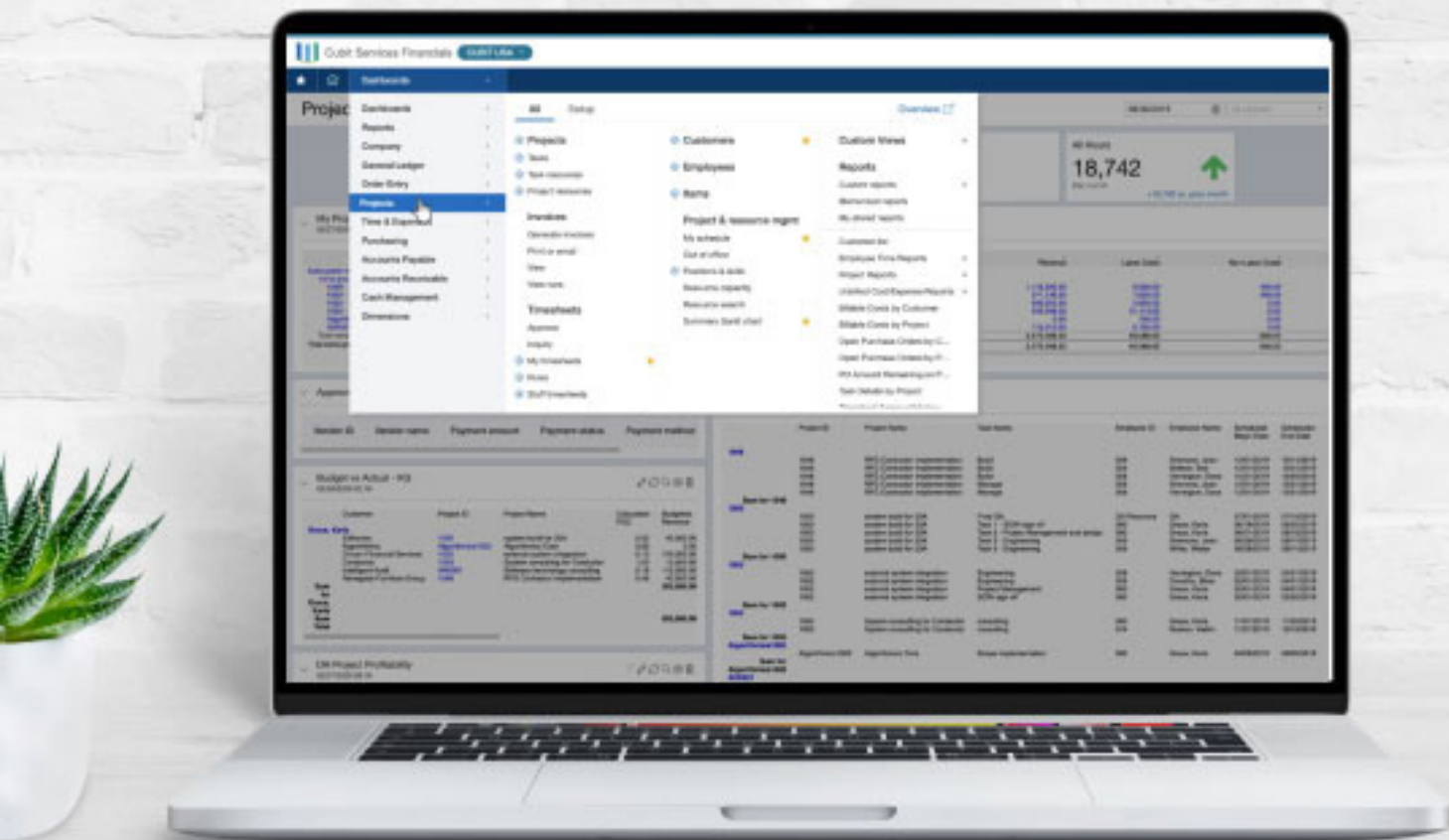




Introducing Sage Intelligent Time

AI-POWERED TIMESHEETS

rkl ØSOLUTIONS



Built right into Sage Intacct cloud ERP, Sage Intelligent Time may be the first AI-based time entry system on the market. Here's a closer look at this new app driven by artificial intelligence and how it compares to traditional timesheet management.

What is Sage Intelligent Time?

Sage Intelligent Time is an AI-powered virtual assistant that revolutionizes time entry. The innovative Time Assistant helps your professional team ensure they account for all of their work - including unplanned and one-off activities such as email communication - that can easily fall through the cracks.

With Sage Intelligent Time, your team's timesheets and time entry is always fast and accurate. That's because the system automatically reconstructs your activities across multiple projects, collecting every minute for more accurate project billing, profitability measurement, and resource management. And because it's driven by AI, Sage Intelligent Time actually learns from all of your previous activities and gets smarter every time you use it.

It's Mobile Too

Available on both Android and iPhone platforms, the mobile app for Sage Intelligent Time is purpose-built for smaller screens and allows your team to complete their timesheets anywhere, anytime. The timesheet application delivers all the same capabilities of the Time Assistant, putting the power of AI in the palm of your hand.

Key benefits of the mobile app include:

- Mobile application accessible on common devices for efficiency on the go
- Time entry and approval capabilities facilitate high productivity for busy teams
- Easy-to-use timesheets help drive faster time entry with fewer delays

Sage Intelligent Time vs Traditional Timesheets

With Sage Intelligent Time, there's no more hounding staff for late timesheets or tedious manual error corrections that are typically associated with traditional timesheet processes. The AI-powered system helps drive speed and accuracy and can automatically alert your team of late or rejected time entry.

Here's a closer look at Sage Intelligent Time versus traditional timesheet entry:

Traditional Timesheets: Staff spends one or more hours per week tediously reconstructing billable activity for their timesheet.

Sage Intelligent Time: AI-powered Time Assistant automatically reconstructs activities, presents them for quick review and gets smarter every time you use it.

Traditional Timesheets: unplanned and one-off activities fall through the cracks and don't get recorded on the timesheet.

Sage Intelligent Time: an "intelligent" process that eliminates the minutiae of timesheet management ensures every minute of every project is collected and billable.

Traditional Timesheets: homegrown (spreadsheets?) or third-party time management solutions are often stand-alone, requiring extra reconciliations and potential out-of-sync issues with your accounting system.

Sage Intelligent Time: as part of the core Sage Intacct Financial Management system, no additional effort is required for timesheet data to flow seamlessly into accounting and invoicing.

Traditional Timesheets: Timesheet data is often only available weekly, bi-weekly, or submitted late, which can delay the reporting insights needed to manage profitability and project resourcing.

Sage Intelligent Time: time entry is fast and efficient so you get continuously updated insights that allow you to close on time, bill on time, and help project managers make critical financial decisions on projects.



Are You Ready for AI-Powered Timesheet Management?

Click below to get in touch, ask a question, schedule a demo, and put the power of modern technology to work for your business!

About RKL eSolutions

Since 2002, RKL eSolutions has helped growing companies maximize their technology resources and investment. Over the years, we have helped hundreds of small and medium sized businesses as their strategic business partner. We specialize in the needs of Entertainment, Software & SaaS, Professional Services, Manufacturing, and Non Profit organizations. Our experienced consultants have a passion for making every facet of your business successful and are intent on building a long-term relationship with every client.

(888) 222-8827 • contact.us@rklesolutions.com • www.rklesolutions.com