

Advisors for Senior Living >

Making sure your data is both up-to-date and compliant can become exhausting and costly, especially if your working with an outdated system and complex spreadsheets. Keep your practices modern and compliant by implementing advanced business management software from Sage Intacct.



SOFTWARE AND TECHNOLOGY

Our software advisors keep our clients' practices modern and compliant by implementing and supporting advanced business management and FP&A software.



CLINICAL CONSULTING

Our consultants draw upon their first-hand clinical experience to maximize quality care for your residents and ensure accurate reimbursement for your facilities.



FINANCIAL AND ADVISORY

RKL helps our clients mitigate risk, and sustain profitability amid the intricate financial, demographic and management challenges, common to senior care.

Together We Achieve IMPACTFUL RESULTS >

STAY HIPAA COMPLIANT

Our team can help develop new HIPAA programs, evaluate existing programs and implement certified-compliant financial management software to keep your patient data safe.

OPTIMIZE YOUR TEAM

RKL provides a range of outsourced services for senior living, from medical billing and MDS support to basic business functions like IT and HR, allowing your team to spend more time on strategic efforts.

MAXIMIZE YOUR PCC INVESTMENT

Our team implements and optimizes PointClickCare, migrates your business from the native GL to Sage Intacct and provides solution support across both products.

STREAMLINE YOUR BUSINESS OPERATIONS

REAL-TIME REPORTING

Sage Intacct gives users the ability to create summary reports at any time across multiple entities so your team operates on the most recent and relevant data.

AUTOMATE BUSINESS PROCESSES

Key finance and accounting processes like procure-to-pay and the monthly close can be automated to save time and improve accuracy.

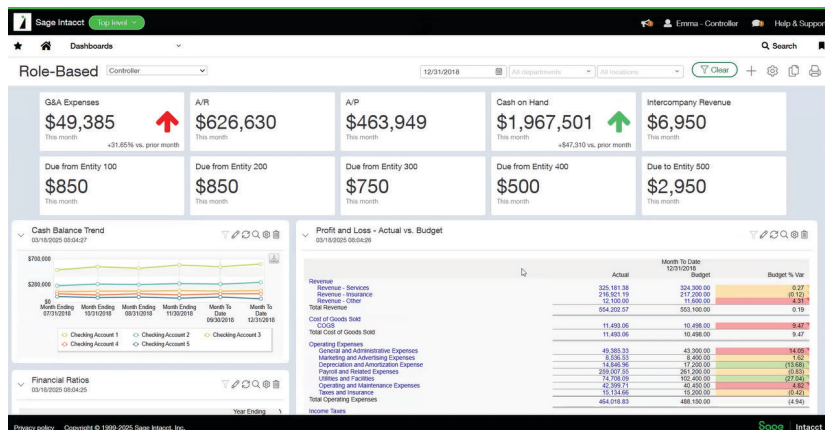


SCAN THE QR CODE TO VIEW OUR
SAGE INTACCT PRODUCT TOUR FOR
SENIOR LIVING ORGANIZATIONS

Sage Intacct CAPABILITIES >

Whether you're managing multiple locations and practices or navigating cost reduction initiatives, here's a look at what Sage Intacct can offer when it comes to the complexities of the Senior Living industry:

- Accounts Payable
- Accounts Receivable
- Advanced Audit Trail (HIPAA compliance)
- Allocations Management
- Analytics and Business Intelligence
- Budgeting and Planning
- Cash Management
- Dimensional General Ledger
- Fixed Assets
- Grant Tracking and Billing
- Inventory Management
- Multi-Entity and Global Consolidations
- Order Management
- Purchasing
- Reporting and Dashboards
- Spend Management
- Time and Expense Management
- Vendor Payment Services



Sage Intacct Role-Based Dashboard

YOUR SENIOR LIVING TEAM:



Jeffrey E. Boland, CPA
Partner and Leader
Senior Living Services



Stephanie S. Kessler, RAC-CT, CHP, Partner
Senior Living Services



Molly Ford
Sales Director
Sage Intacct



A TEAM YOU CAN TRUST

Through the whole process the RKL eSolutions team has been amazing. They get what we do, and were able to help us think about the solutions that best fit our business and guide us through implementation.

FORMER CFO, HOMESTEAD VILLAGE

WHAT IS NEXT for You? >

At RKL eSolutions, we're focused on helping organizations like yours get next-level results from their people, processes and technology. From sales to accounting, to patient care or the boardroom, from the server to the cloud, our team of advisors offers tailored solutions, resources and support to extend, enhance and evolve your technology infrastructure. Built on an understanding of what drives your business, we'll help you get to the next level with modern technology solutions.

Learn more at rklesolutions.com

